



EDOTCO GROUP

MALAYSIA DIGITAL
INFRASTRUCTURE CHAMPION –
Challenges towards Net Zero



EDOTCO: Resolving connectivity for all

A leading integrated telecommunications infrastructure service provider

6th

Largest TowerCo in the World

3rd

Largest amongst Multinational TowerCos

54,083

Number of towers
Owned + Managed*
54,083

181 mil

Mobile users connected

Represents 27% of total 664 million mobile users in our markets

17.9 Exabytes

Mobile data consumed from our towers in 2021

Represents 28% of total 63.8 exabytes of mobile data consumed in our markets

EDOTCO is a Malaysian government-linked company (GLC) with diverse shareholders.



36.73% Khazanah Nasional Berhad

PNB

18.39% Permodalan Nasional Berhad



16.88% Employees Provident Fund Board

16.92% Others

11.08% Foreign Shareholdings



Axiata Group Berhad, is a Malaysian multinational telecommunications conglomerate with extensive operations in Asia.

63.00%



INCJ, Ltd. was established in September 2018 via company split from Innovation Network Corporation of Japan (INCJ)

21.14%



KHAZANAH NASIONAL

Khazanah Nasional Berhad is the sovereign wealth fund of the Government of Malaysia. One of the largest sovereign wealth funds in the world.

100%



Kumpulan Wang Persaraan (KWAP) is a statutory body which manages the pension scheme for Malaysia's public employees.

10.57%

5.29%



EDOTCO Group Sdn Bhd
 EDOTCO Malaysia Sdn Bhd
 EDOTCO Bangladesh Co. Ltd
 EDOTCO (Cambodia) Co., Ltd.
 EDOTCO Pakistan (Pvt.) Ltd
 EDOTCO Services Lanka (Pvt.) Ltd
 EDOTCO Myanmar Limited
 EDOTCO Lao Company Limited
 ISOC EDOTCO Towers Inc.
 (Philippines)
 Tanjung Digital Sdn Bhd
 Yiked Bina Sdn Bhd
 On Site Services Sdn Bhd
 Touch Mindscape Sdn Bhd
 Touch Matrix Sdn Bhd
 Shahzan Alam Muda Sdn Bhd
 Touch Mobile Sdn Bhd



EDOTCO is the 6th Largest TowerCo in the World²

Unique portfolio of c.**34,000** owned and c.**23,000** managed towers across **9** fast growing markets in Asia

Malaysia
 Towers Owned: 6,170
 Managed Sites: 12,994

Entry Year: **2013**
 Colocation Ratio: **2.3x**

Philippines
 Towers Owned: 3,073
 Managed Sites: -

Entry Year: **2019**
 Colocation Ratio: **1.0x**

Myanmar
 Towers Owned: 2,127
 Managed Sites: 945

Entry Year: **2015**
 Colocation Ratio: **2.0x**

Pakistan
 Towers Owned: 2,255
 Managed Sites: -

Entry Year: **2015**
 Colocation Ratio: **1.4x**

Bangladesh
 Towers Owned: 15,465
 Managed Sites: 3,775

Entry Year: **2013**
 Colocation Ratio: **1.5x**

Indonesia
 Towers Owned: 761
 Managed Sites: 166

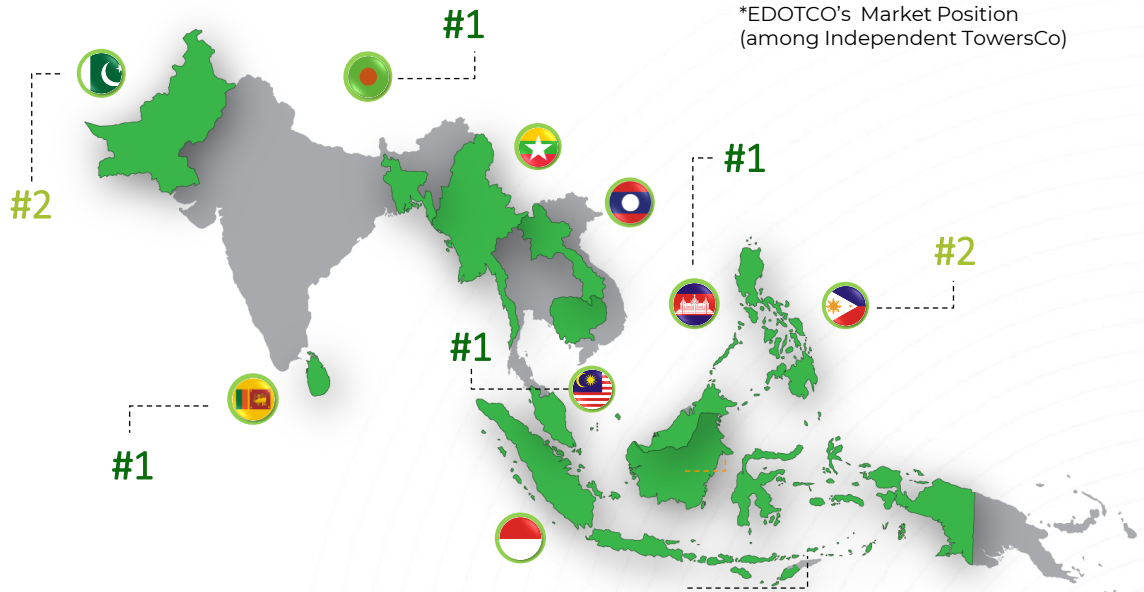
Entry Year: **2021**
 Colocation Ratio: **1.2x**

Cambodia
 Towers Owned: 3,234
 Managed Sites: 4,359

Entry Year: **2013**
 Colocation Ratio: **1.4x**

Sri Lanka
 Towers Owned: 686
 Managed Sites: 740

Entry Year: **2015**
 Colocation Ratio: **1.1x**



Note:

1. USDMYR = 4.4, USDBDT = 102.50, USDPHP = 55.7, USDPKR = 224.3, USDLKR = 368.5, USDIDR = 15,377.3
2. By tower count among global ITC players according to TowerXchange Tower League Table as of Q3E 2022

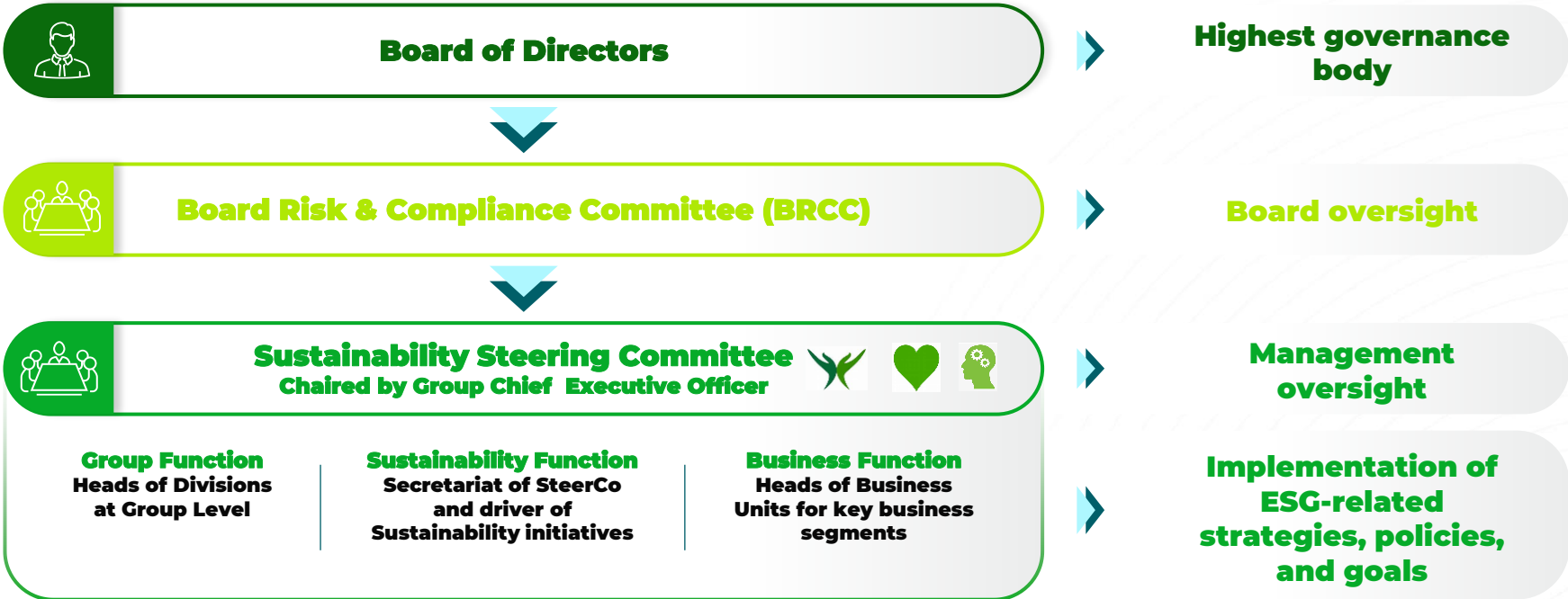
Net Zero Challenge 1: Own Company Readiness



Net Zero Initiative 1: Governance Structure

Sustainability governance structure designed and approved by the Board to enable accountable yet distributed responsibilities

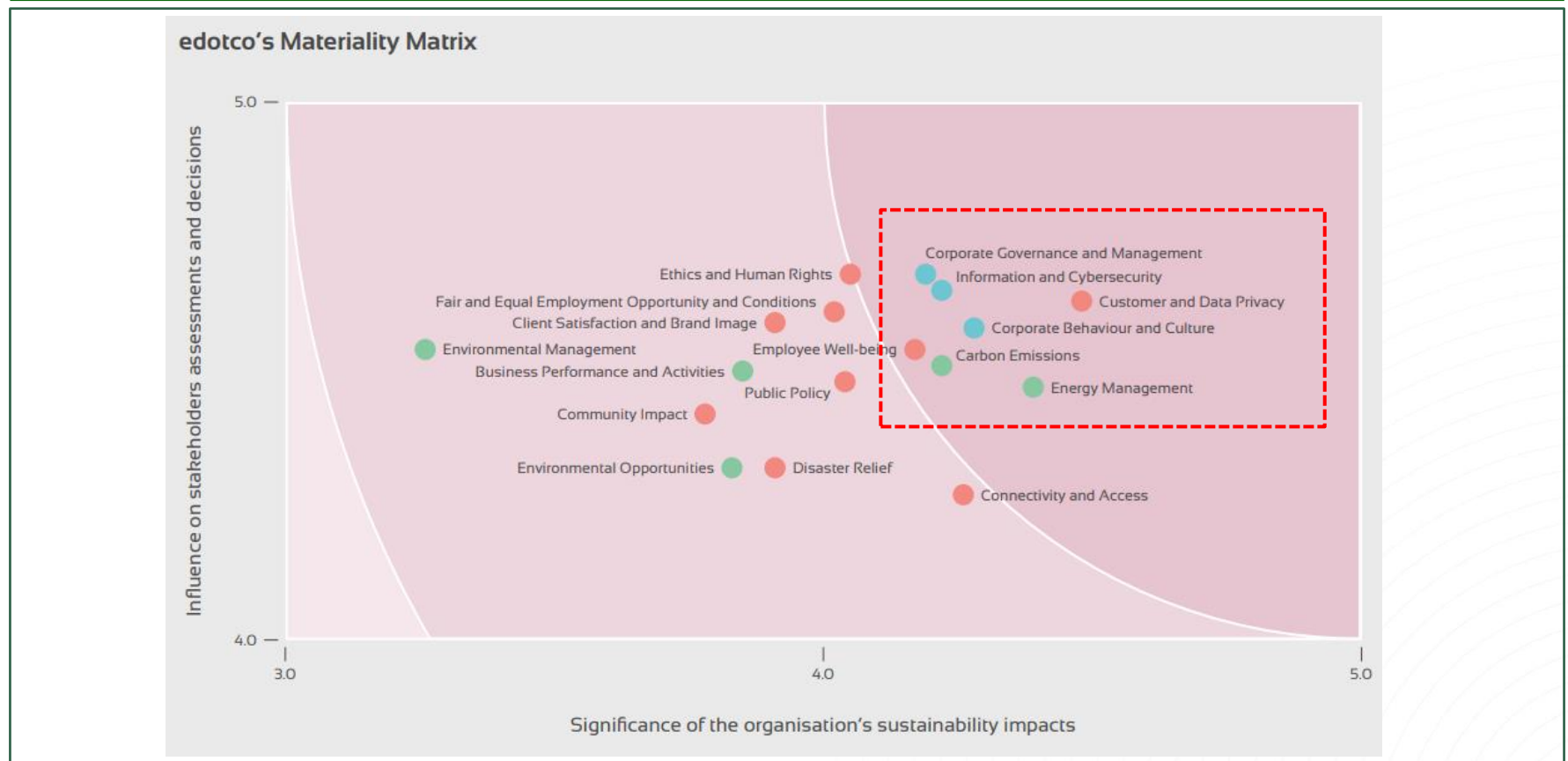
EDOTCO Sustainability Governance Structure



Net Zero Challenge 2: Macro & Country Readiness



Net Zero Initiative 2: Materiality Assessment – drives our focus since 2021



Net Zero Challenge 3: Customers & Vendors Readiness

Commercial model

- Fix or pass through?
- Capex responsibility
- Increase in CAPEX
- Green target
- Other ESG target

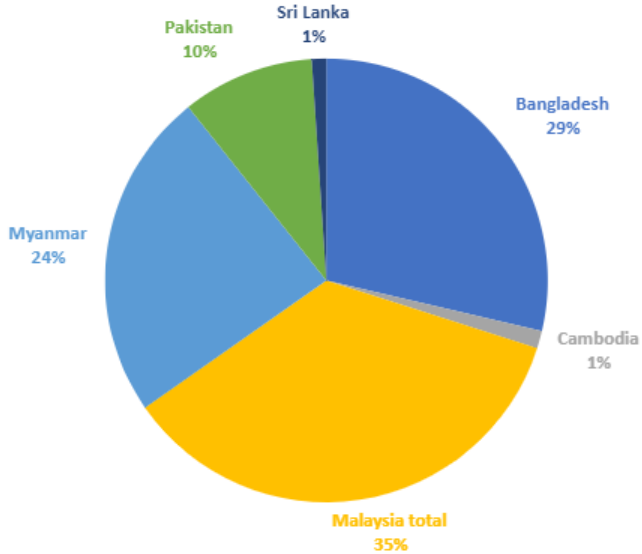
Supply chain

- Increase in cost
- Background screening
- Risk appetite
- Enforcement
- Other ESG target

Collaboration

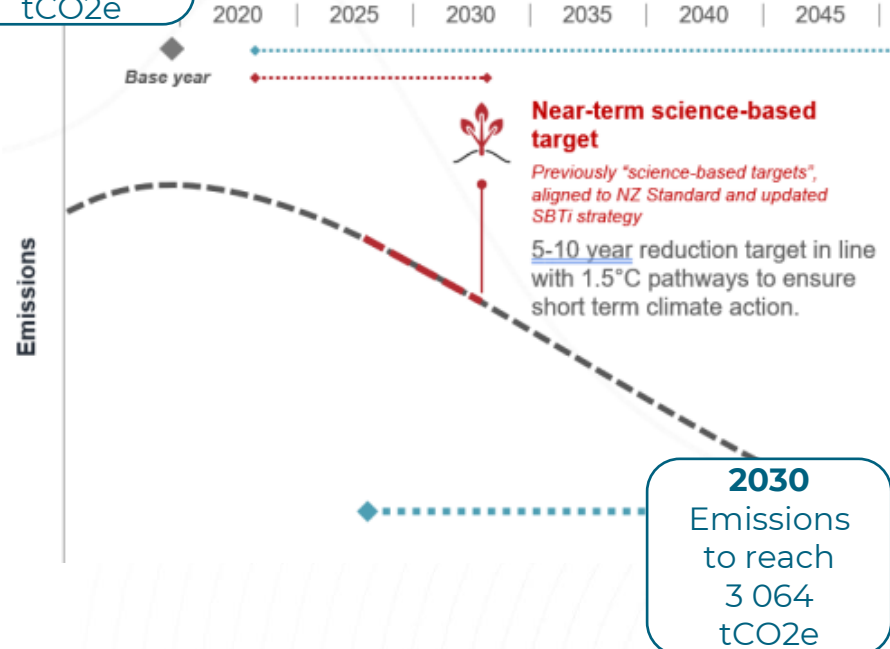
Net Zero Initiative 3: Calculate our GHG emission – Scope 1 & 2

SCOPE 1&2 EMISSIONS BY COUNTRY 2020

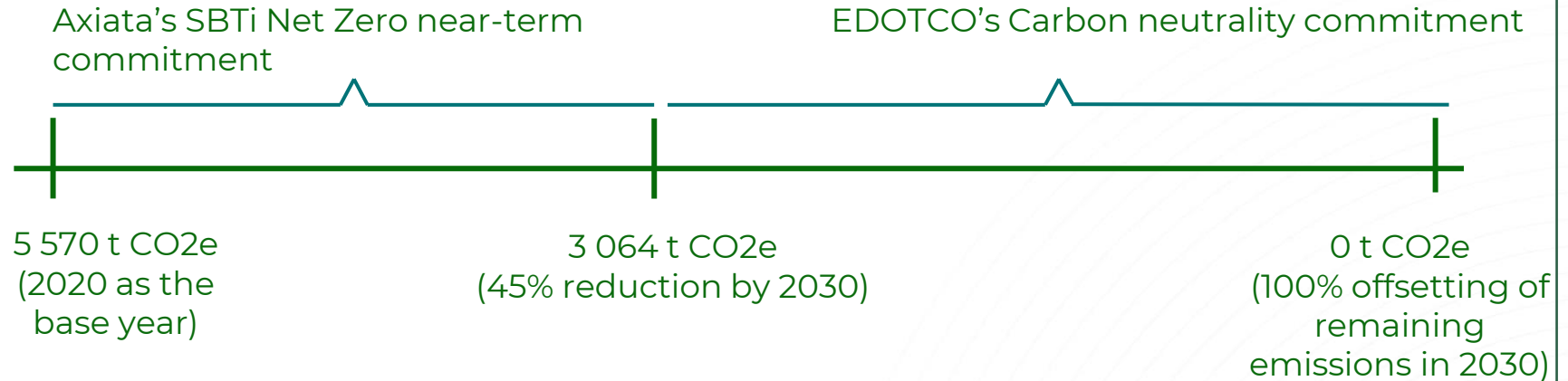


2020
Base year
emissions –
5 570
tCO₂e

45% reduction
(as per SBTi)



Net Zero Initiative 3: Direct Emission - Scope 1 & 2 (cont'd)



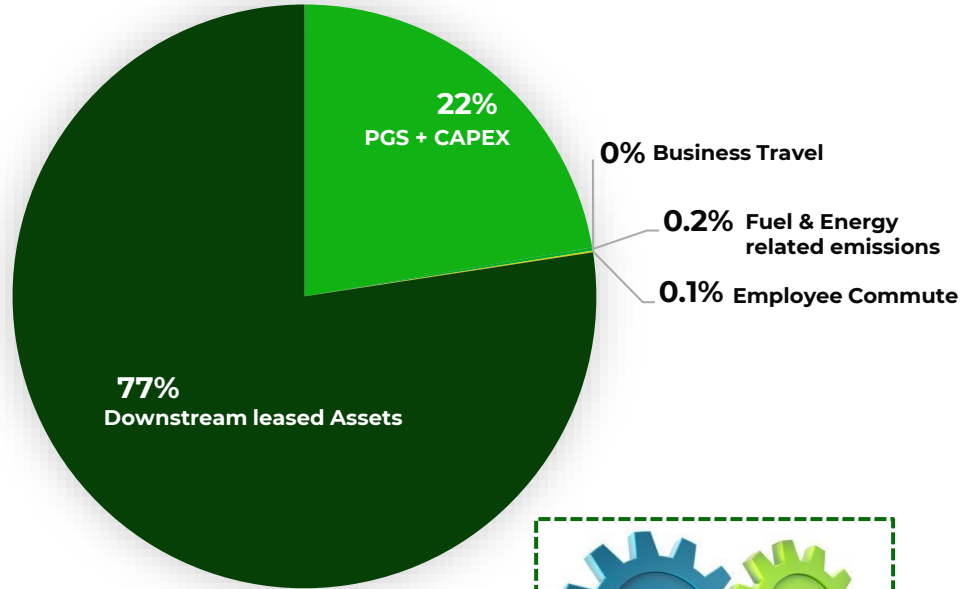
- Switch to plug-in diesel hybrids vehicles (MY, BD)
- Switch to CNG Vehicles (BD, MM, KH, PK)
- Replacement of petrol vehicles with Evs (MY, BD)
- Remote test run
- Smart locks
- Fleet tracking

- Green electricity purchase for HQs

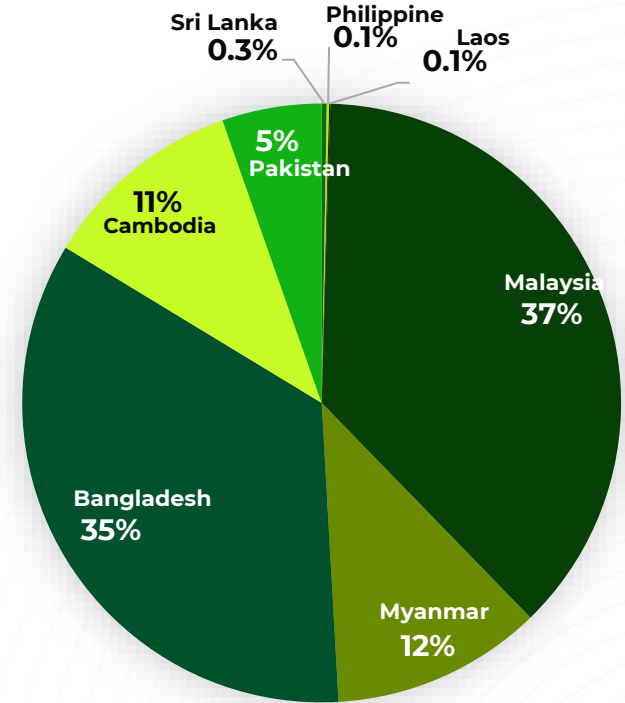


Initiative 3: EDOTCO Scope 3 Emission

YR 2021 Scope 3 Emission by Categories



YR 2021 Scope 3 Emission by Countries



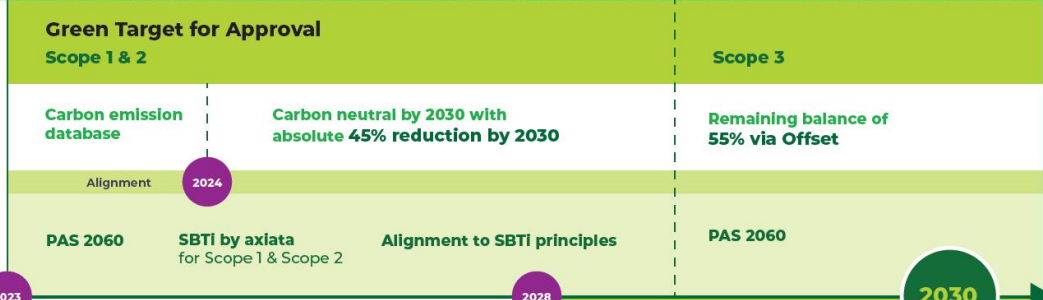
Output: Green Roadmap



2022

Launch of 1st EDOTCO Inaugural Sustainability Report

2023



2028



2030

EDOTCO
carbon neutral
2030

Conclusion

Our VENDORS

Vendors Development Programme

Primary: SCM | Support: Sustainability

OUR CUSTOMERS

Energy Transition Plan

Initiation stage: Collaboration, Discussion, Awareness

Primary: ETI | Support: Sustainability

Primary: Commercial | Support: Sustainability

OUR STAFF

Green Office MY

DEI as a Strategy

Primary: Operation ETI | Support: Sustainability

Primary: HR | Support: Sustainability

OUR COMMUNITY

Community Programme (NTC Focus with Rangers)

Primary: CSR | Support: Sustainability

Our REGULATORS

Feedback, Roundtables, Policy advocacy

Primary: Sustainability



Let's have a look

WHAT WE HAVE ACHIEVED SO FAR FOR OUR

SUSTAINABILITY JOURNEY

