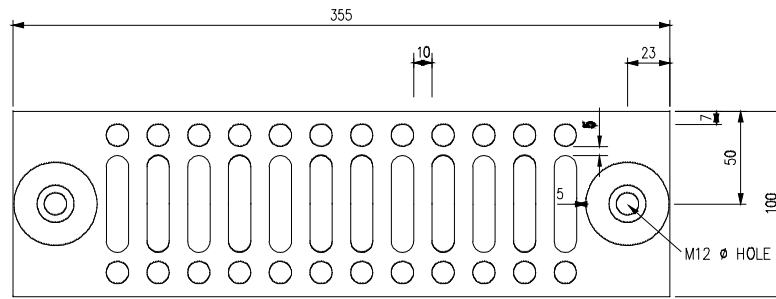
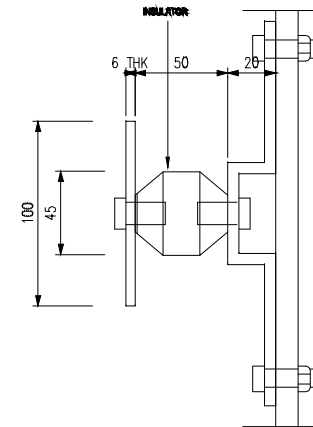


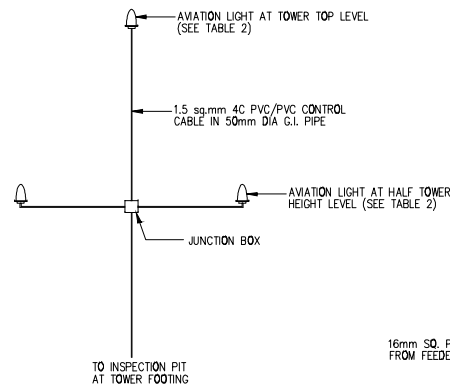
TYPICAL TOWER ELEVATION



FRONT VIEW
GROUNDING BUSBAR



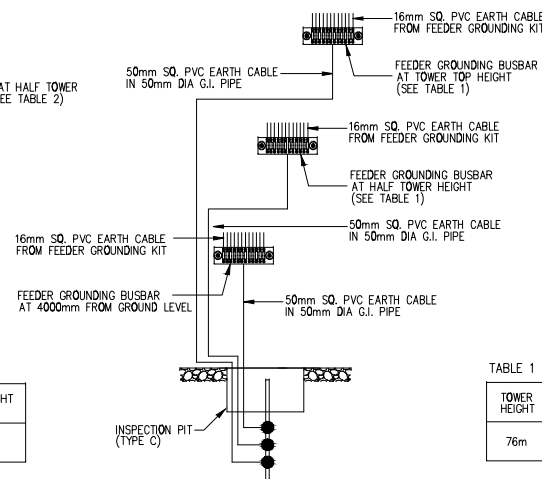
ELEVATION



AVIATION LIGHT SCHEMATIC

TABLE 2 : LOCATION OF AVIATION LIGHT

TOWER HEIGHT	AT TOWER TOP (1 NUMBER)	AT HALF TOWER HEIGHT (2 NUMBERS)
76m	76m	38m



FEEDER GROUNDING BUSBAR SCHEMATIC

TABLE 1 : LOCATION OF MAIN GROUNDING BUSBAR

TOWER HEIGHT	AT BOTTOM OF TOWER	AT HALF TOWER HEIGHT	AT TOWER TOP HEIGHT
76m	4m	38m	70m

NOTE:

NOTES:

- AIR TERMINAL SHALL COVERED 45 DEGREE OF THE AREA FROM TOP OF TERMINAL
- IN ORDER TO REDUCE EARTHING RESISTANCE READING BELOW 5 Ohm, UTILISATION OF COMPOUND AS A MEDIUM IS ACCEPTABLE.

INVITATION REFERENCE NO:
MCMC/RDD/PDD(4)/T3_Extn(P2)/
TCA/12/14(12)

PROJECT TITLE:

TIME 3 - EXTENSION

DRAWING TITLE:

DRAWING 4:
PLAN AND SECTIONS DETAILS OF
EARTHING SYSTEM

DATE:

DEC 2014

SCALE:

1 : 50