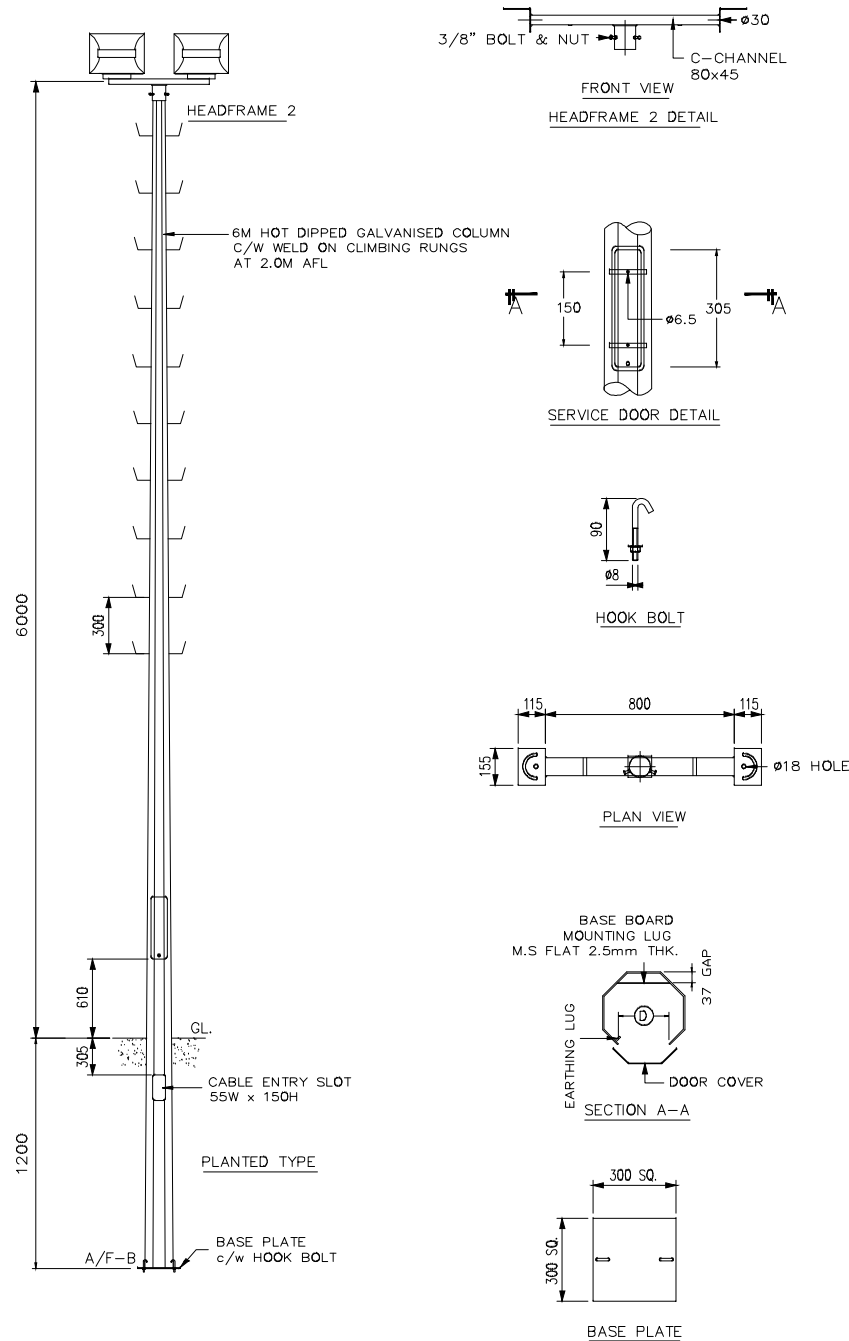


NOTE



TECHNICAL SPECIFICATIONS

1. THE DESIGN OF LIGHTING COLUMNS ARE DYNAMICALLY APPROVED AND VERIFIED BY USING (FINITE ELEMENT ANALYSIS), DESIGNED TO WITHSTAND WIND SPEED OF 35M PER SECOND, TOPOGRAPHY, GROUND ROUGHNESS AND STATISTICAL FACTOR OF 1.0.
2. LIGHTING COLUMNS COMPLY TO THE BRITISH LIGHTING COLUMNS SPECIFICATION BS 5649.
3. MATERIALS USED FOR LIGHTING COLUMNS ARE COMPLIANCE TO BS 4360 GRADE 50A, BS 4360 GRADE 43A AND BS 1387 RESPECTIVELY.
4. LONGITUDE OF LIGHTING COLUMNS ARE SEAM WELDED CONFORM TO BS 5135 BY AUTOMATIC CONTINUOUS METAL INERT GAS (MIG) PROCESS.
5. LIGHTING COLUMNS ARE ANTI-CORRODED BY HOT-DIP GALVANIZED, COMPLIANCE TO GALVANIZING STANDARD ISO 1461 : 1999.
6. SERVICE DOOR DIMENSION ARE GIVEN AS A GUIDE ONLY. THE CONTRACTOR MUST SATISFY HIMSELF THAT DIMENSION GIVEN IS ADEQUATE FOR THE INSTALLATION OF THE REQUIRED CONTROL GEARS.
7. THE SHAFT OF 6M HEIGHT LIGHTING COLUMNS SHALL BE IN SINGLE SECTION WHEREAS THE SHAFT OF 8M TO 12M HEIGHT LIGHTING COLUMNS SHALL BE IN 2 SECTIONS.

INVITATION REFERENCE NO:
MCMC/RDD/PDD(4)/T3_Extn(P2)/
TCA/12/14(12)

PROJECT TITLE:

TIME 3 - EXTENSION
(24M MONOPOLE - SPOKE SITE)

DRAWING TITLE:

DRAWING 9:
COMPOUND LIGHTING COLUMN

DATE: DEC 2014

SCALE: 1 : 125